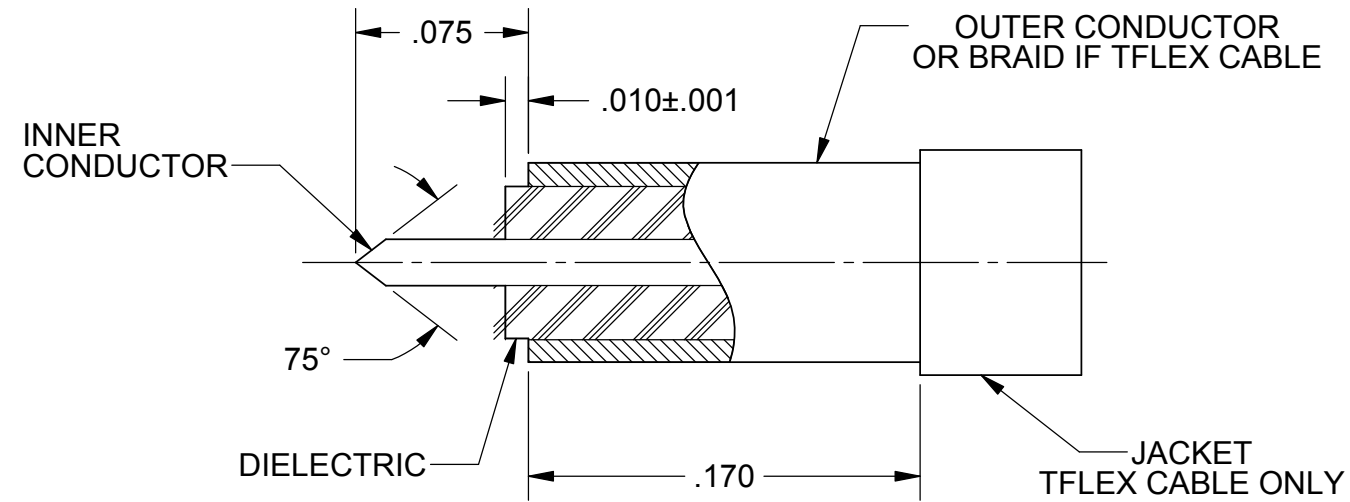
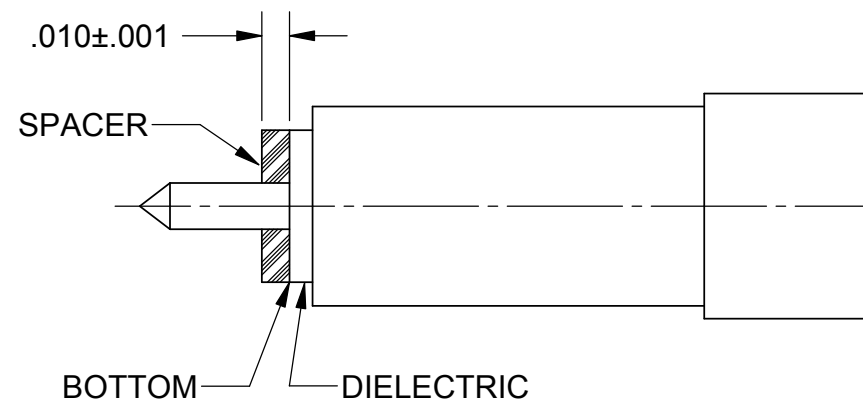


REVISION HISTORY			
REV	DESCRIPTION	DATE	APPROVED
-	REL. NRN 33536	01/06	BRT
A	REV. DCN 41545	08/15/15	FED



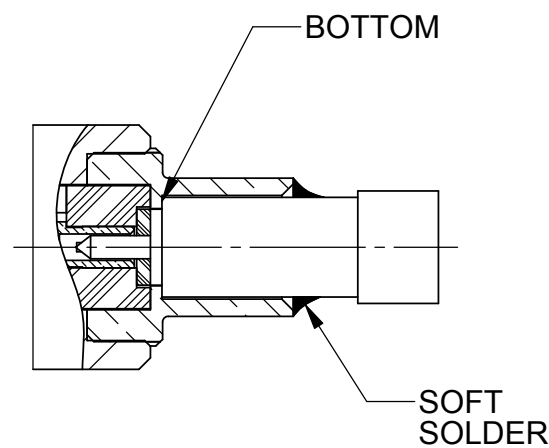
STEP 1

TRIM CABLE OUTER CONDUCTOR AND DIELECTRIC TO DIMENSIONS SHOWN. IF USING TFLEX CABLE, TRIM JACKET AS SHOWN. CHAMFER INNER CONDUCTOR TO CONFIGURATION SHOWN (FILING IS ACCEPTABLE). DO NOT NICK INNER CONDUCTOR.



STEP 2

SLIDE SPACER ONTO INNER CONDUCTOR UNTIL IT BOTTOMS DIELECTRIC.



STEP 3

INSERT CABLE INTO BACK OF CONNECTOR BODY AND BOTTOM AGAINST CABLE STOP. SOLDER CABLE TO BODY. REMOVE ANY EXCESS SOLDER.

SF1233-6002
USED ON:

MATERIAL:	PER BOM
FINISH:	PER BOM
SURFACE AREA:	N/A
	PROPRIETARY
THE INFORMATION CONTAINED IN THIS DRAWING IS THE SOLE PROPERTY OF SV MICROWAVE, INC. ANY REPRODUCTION IN PART OR AS A WHOLE WITHOUT THE WRITTEN PERMISSION OF SV MICROWAVE, INC IS PROHIBITED.	

DIMENSIONS ARE IN INCHES TOLERANCES:	
FRACTIONAL:	±1/64 ANGULAR: X° ±1'0" X'X' ±15'
DECIMAL:	X ±.030 .XX ±.010 .XXX ±.005
INTERPRET DIMENSIONS AND TOLERANCES PER ASME Y14.5M - 1994	
THIRD ANGLE PROJECTION	

UNLESS OTHERWISE SPECIFIED	
1) ALL DIMENSIONS ARE AFTER PLATING. 2) BREAK CORNERS & EDGES .005 R. MAX. 3) CHAM. 1ST & LAST THREADS. 4) SURFACE ROUGHNESS 63 √ MIL-STD-10. 5) DIA.'S ON COMMON CENTERS TO BE CONCENTRIC WITHIN .005 T.I.R. 6) REMOVE ALL BURRS	
DRAWN:	MGT 01/11/06
CHECKED:	BRT 01/11/06
APPROVED:	BRT 01/11/06
E.M. SIMULATION:	N/A

SV Microwave, Inc. 2400 Centrepark West Drive, Suite 100 West Palm Beach, FL 33409			
TITLE: CABLE ASSEMBLY INSTRUCTIONS			
SIZE	CAGE CODE	DWG. NO.	
B	95077	300-12-013	
SCALE: 8:1			SHEET 1 OF 1