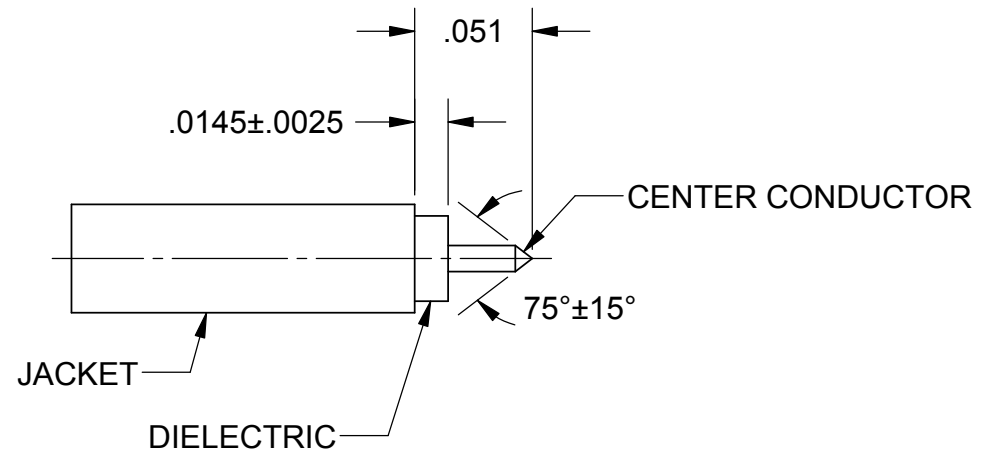
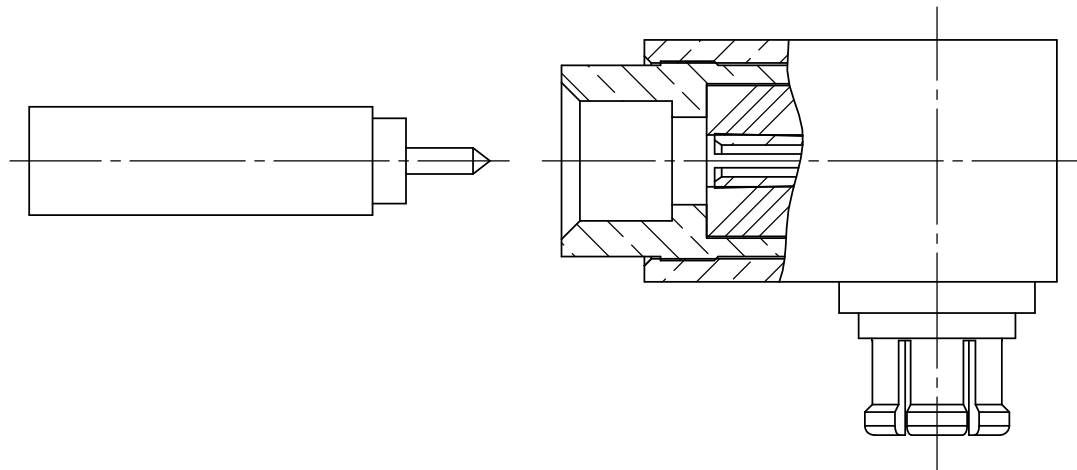


REVISION HISTORY			
REV	DESCRIPTION	DATE	APPROVED
-	NRN 37277	03/12	STW



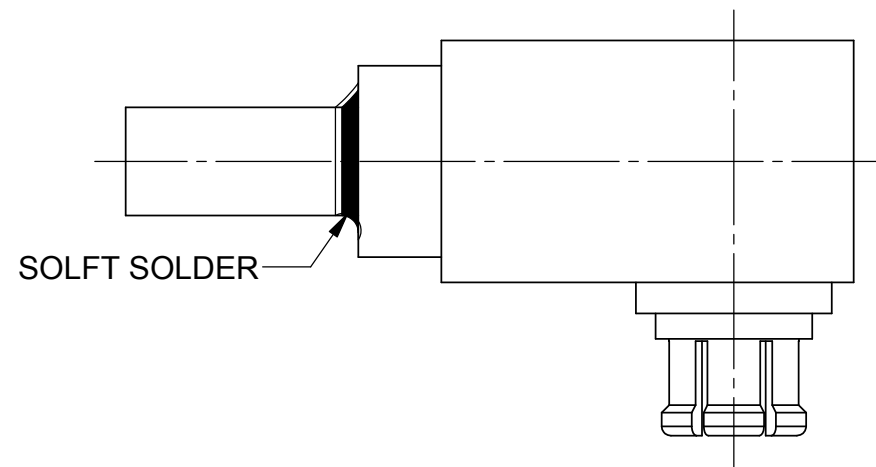
**STEP 1:**

TRIM CABLE TO DIMENSIONS SHOWN. DO NOT TO NICK CENTER CONDUCTOR.



**STEP 2:**

POINT CENTER CONDUCTOR AS SHOWN.



**STEP 3:**

INSERT PREPARED CABLE INTO CONNECTOR ASSEMBLY (CENTER CONDUCTOR WILL ENTER A SOCKET CONTACT) AND SOFT SOLDER USING MINIMAL HEAT AND LIMITED TIME. TEMPERATURE MUST NOT EXCEED 550 °F.

MATERIAL:	N/A	DIMENSIONS ARE IN INCHES TOLERANCES: FRACTIONAL: ±1/64 ANGULAR: X° ±1°0' X'X' ±15' DECIMAL: X ±.030 .XX ±.010 .XXX ±.005 INTERPRET DIMENSIONS AND TOLERANCES PER ASME Y14.5M - 1994	UNLESS OTHERWISE SPECIFIED 1) ALL DIMENSIONS ARE AFTER PLATING. 2) BREAK CORNERS & EDGES .005 R. MAX. 3) CHAM. 1ST & LAST THREADS. 4) SURFACE ROUGHNESS 63√ MIL-STD-10. 5) DIA.'S ON COMMON CENTERS TO BE CONCENTRIC WITHIN .005 T.I.R. 6) REMOVE ALL BURRS	<b>SV Microwave, Inc.</b> 2400 Centrepark West Drive, Suite 100 West Palm Beach, FL 33409 TITLE: <b>CABLE ASSEMBLY INSTRUCTIONS</b>	
FINISH:	N/A				
SURFACE AREA:	N/A				
<b>PROPRIETARY</b>		THIRD ANGLE PROJECTION	DRAWN: FED 03/28/12	SIZE CAGE CODE DWG. NO. <b>B 95077 300-38-003</b>	
THE INFORMATION CONTAINED IN THIS DRAWING IS THE SOLE PROPERTY OF SV MICROWAVE, INC. ANY REPRODUCTION IN PART OR AS A WHOLE WITHOUT THE WRITTEN PERMISSION OF SV MICROWAVE, INC IS PROHIBITED.			CHECKED: STW 03/28/12		
			APPROVED: STW 03/28/12		
3822-40001	USED ON:	SCALE: 12:1		SHEET 1 OF 1	