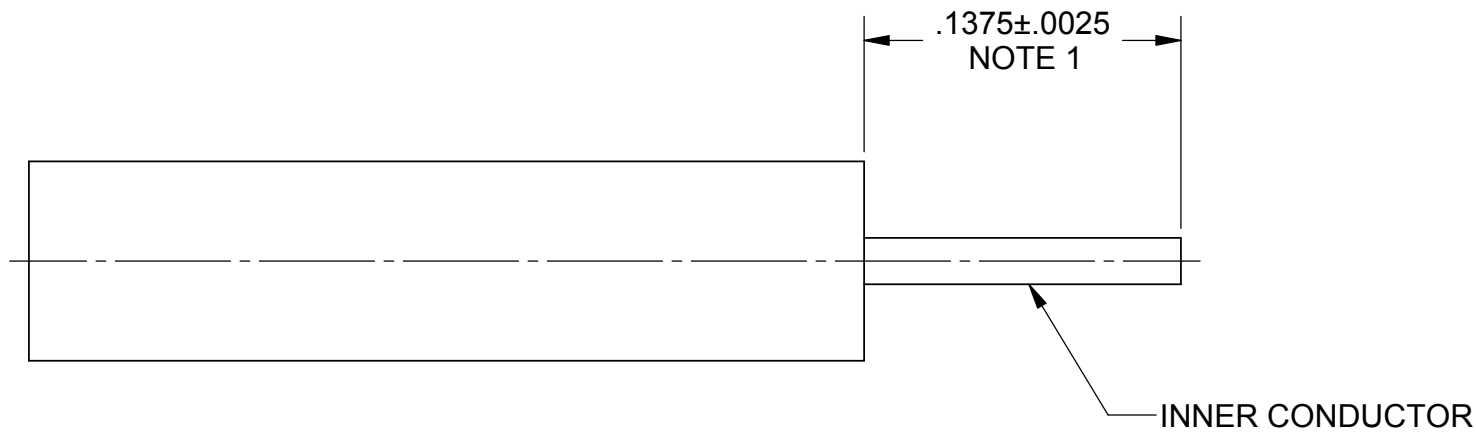
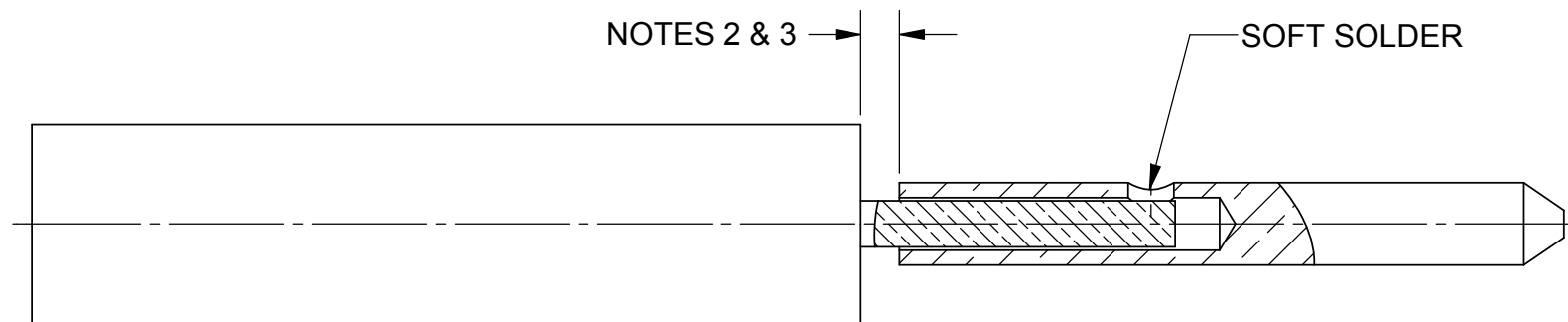


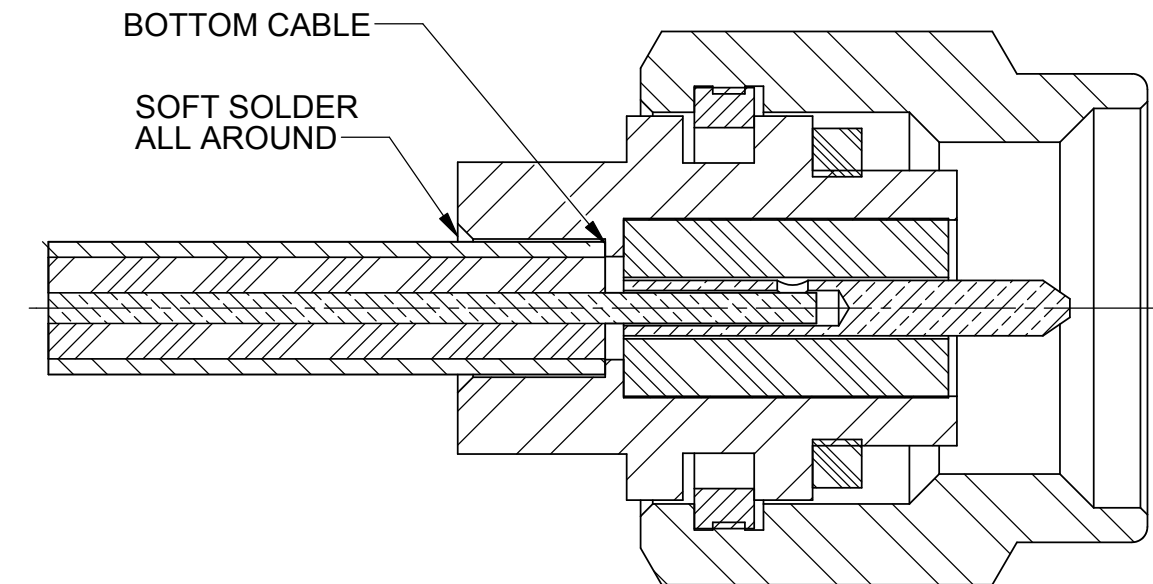
REVISION HISTORY			
REV	DESCRIPTION	DATE	APPROVED
C	DCN 35051	04/07	STW
D	DCN 37413	03/10	PJS
E	DCN 42006	1/16	STW



STEP 1: TRIM CABLE TO DIMENSION SHOWN. TIN EXPOSED AREA OF CENTER CONDUCTOR.



STEP 2: PLACE CONNECTOR CONTACT OVER CABLE CENTER CONDUCTOR. USE A SPACER OR SHIM TO MAINTAIN THE COMPENSATION GAP. SOFT SOLDER CONNECTOR CONTACT TO CABLE CENTER CONDUCTOR. REMOVE SPACER OR SHIM.



STEP 3: INSERT CABLE/CONTACT ASSEMBLY INTO CONNECTOR ASSEMBLY AS SHOWN UNTIL CABLE JACKET BOTTOMS SECURELY AGAINST SHOULDER IN BODY. SOFT SOLDER CABLE TO CONNECTOR AS SHOWN.

- NOTES:
- DIM IS $.100 \pm .0025$ WHEN USING SF2906-6002M CONNECTOR.
 - DIM IS $.010 \pm .001$ WHEN USING SF2906-6002M CONNECTOR.
 - DIM IS $.015 \pm .001$ WHEN USING DXM 086 CABLE, DIM IS $.017 \pm .001$ FOR ALL OTHER CABLES.

SEE NOTES
USED ON:

MATERIAL: -	DIMENSIONS ARE IN INCHES TOLERANCES:	UNLESS OTHERWISE SPECIFIED	SV Microwave, Inc. 2400 Centrepark West Drive, Suite 100 West Palm Beach, FL 33409 TITLE: SEMI-RIGID CABLE TO SMA SOLDER-ON CONNECTOR ASSEMBLY INSTRUCTIONS
FINISH: PER BOM	FRACTIONAL: $\pm 1/64$ ANGULAR: X° $\pm 1'0''$ X'X' $\pm 15''$	1) ALL DIMENSIONS ARE AFTER PLATING. 2) BREAK CORNERS & EDGES .005 R. MAX. 3) CHAM. 1ST & LAST THREADS. 4) SURFACE ROUGHNESS 63 $\sqrt{\text{MIL-STD-10}}$. 5) DIA.'S ON COMMON CENTERS TO BE CONCENTRIC WITHIN .004 T.I.R. 6) REMOVE ALL BURRS	
SURFACE AREA: -	DECIMAL: X $\pm .030$.XX $\pm .010$.XXX $\pm .005$	INTERPRET DIMENSIONS AND TOLERANCES PER ASME Y14.5M - 1994	DRAWN: ADK 04/30/07 CHECKED: RRA 12/06/74 APPROVED: PMG 12/10/74 E.M. SIMULATION: N/A
PROPRIETARY THE INFORMATION CONTAINED IN THIS DRAWING IS THE SOLE PROPERTY OF SV MICROWAVE, INC. ANY REPRODUCTION IN PART OR AS A WHOLE WITHOUT THE WRITTEN PERMISSION OF SV MICROWAVE, INC IS PROHIBITED.	THIRD ANGLE PROJECTION		SIZE: B CAGE CODE: 95077 DWG. NO.: 300-80-118 SCALE: 12:1 SHEET 1 OF 1